

Point to Point Healthcare - Active Reporting System -

Installation Guide

1. Using Internet Explorer, go to:

<https://www.p2phc.com/healthspace/clients/activereporting/publish.htm>

Healthcare Interactive Active Reporting System

Name: Active Reporting System

Version: 1.0.0.3

Publisher: Healthcare Interactive

Supported Operating Systems:

- Windows XP, SP2 or higher (to download: Microsoft Windows XP Service Pack 2)
- Windows Vista, SP1 or higher (use Windows Update in Vista menu to install latest service pack)

These minimum system requirements and security updates will be installed automatically:

- Windows Installer 3.1 (less than 5 min, most systems already have this component)
- .NET Framework 3.5 SP1 (install can take up to 25 min)
- Microsoft Visual Studio 2008 Report Viewer (less than 5 min)

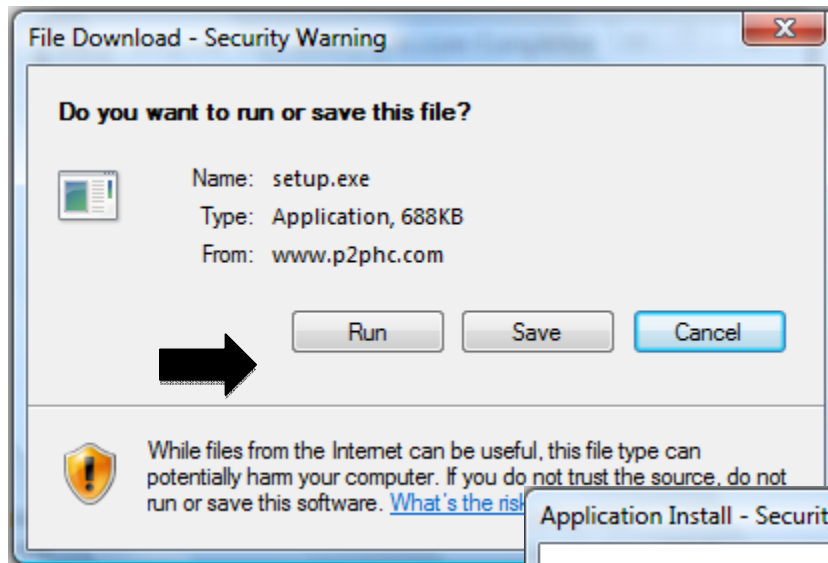
If these components are already installed, you can [launch](#) the application now.
Otherwise, click the button below to install the prerequisites and run the application.
Note on some operating systems, these updates may require a restart.

Install



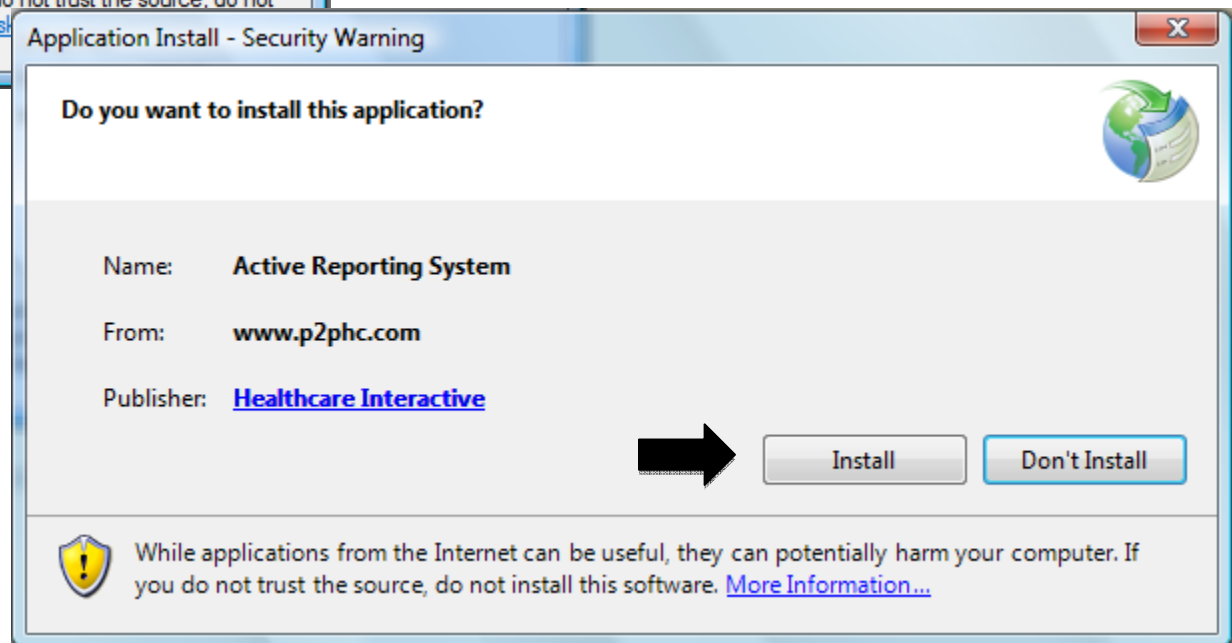
2. Click "Install"

Please insure that you have the minimum requirements on your PC.

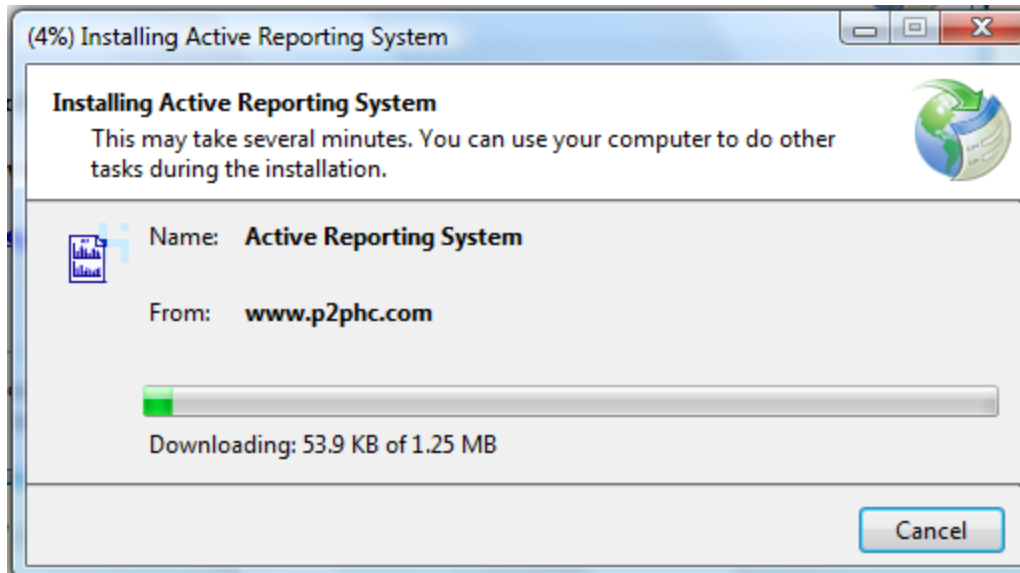


3. Click "Run" to install the program to your desktop.

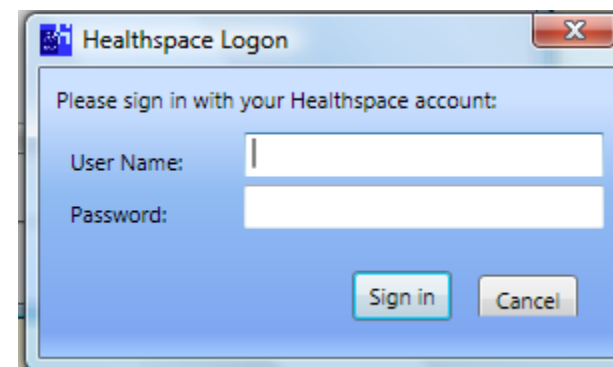
4. Click "Install" on the security warning page.



5. Installation status window will appear



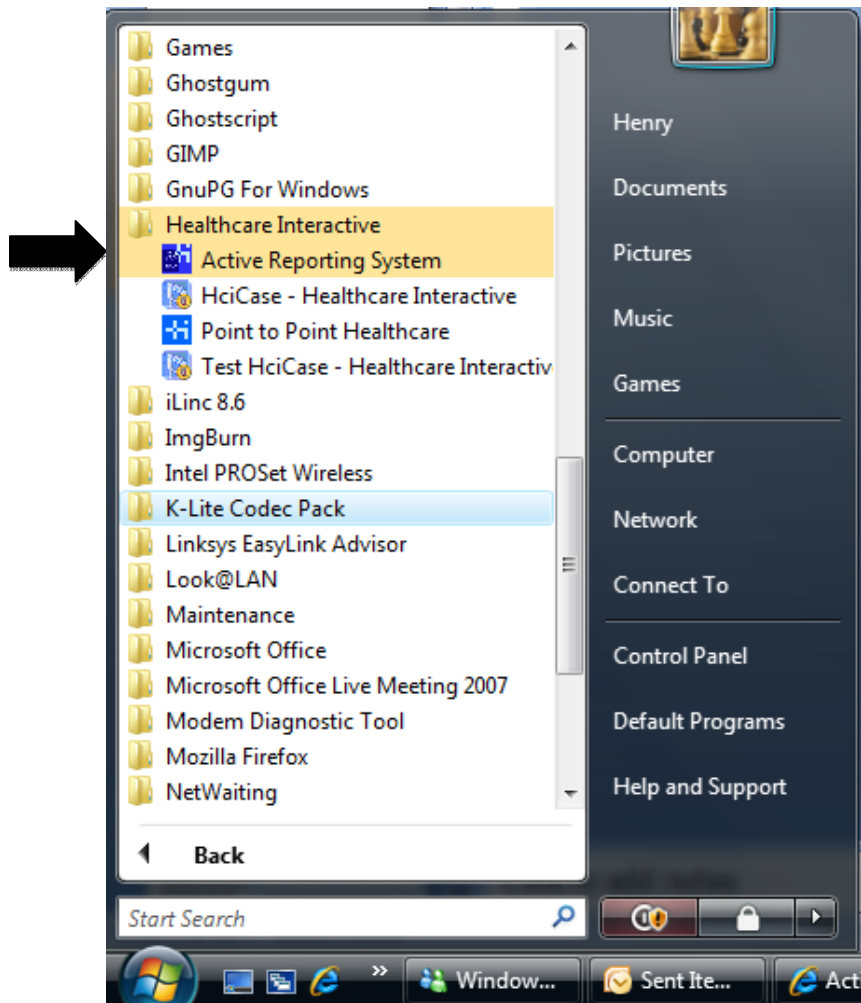
6. After the installation is completed, a login window appear



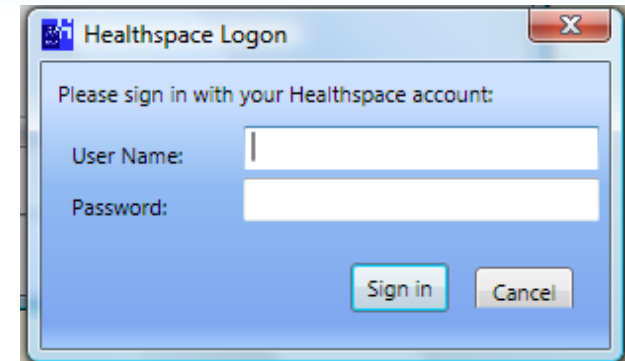
Point to Point Healthcare - Active Reporting System -

Quick Start Guide

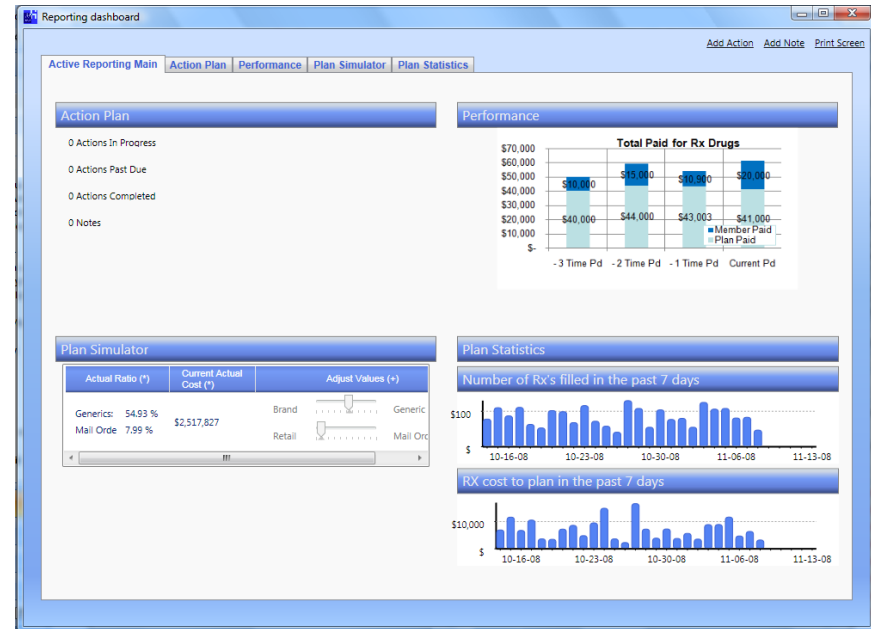
1. From 'Start' menu, launch the Point to Point Healthcare application



2. Login

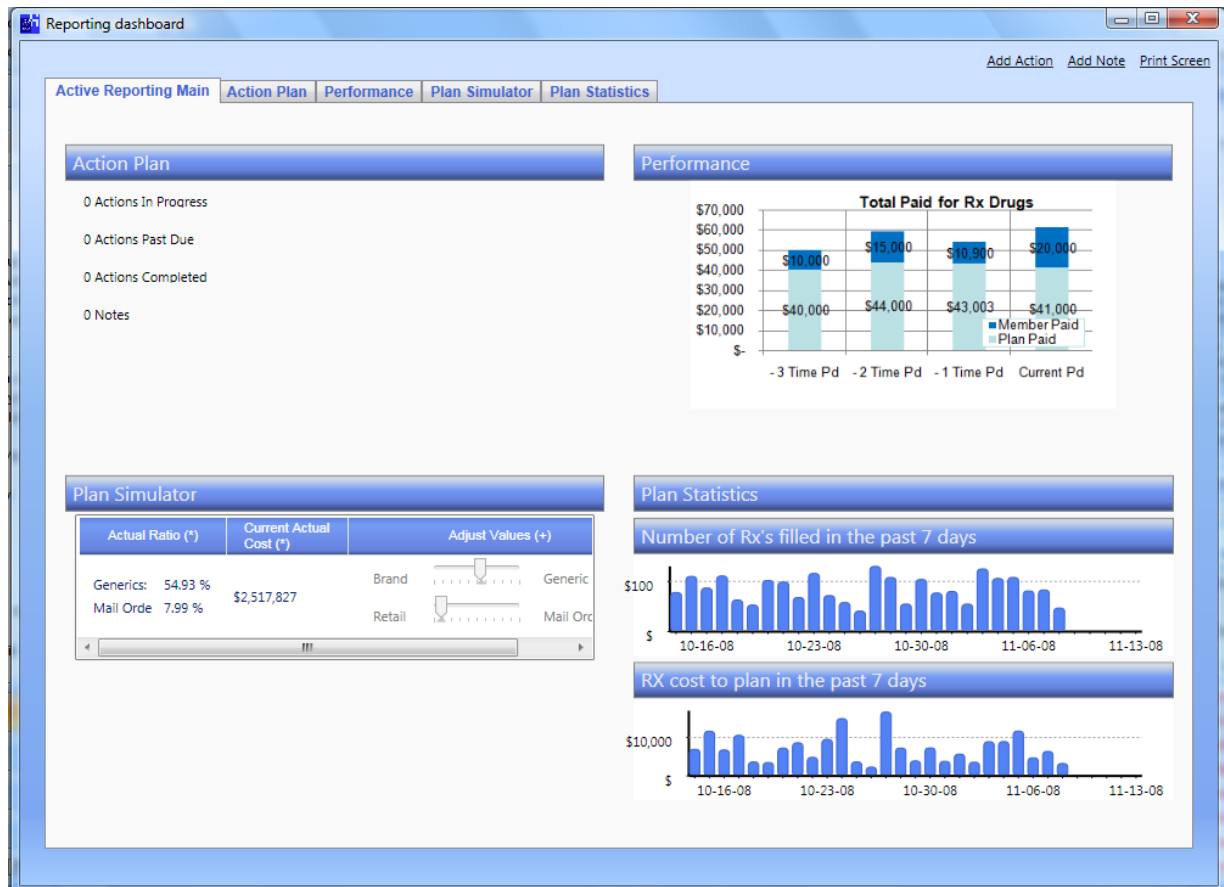


3. Click the Reports Tab



Main dashboard view shows four quadrants, each corresponding to one aspect of how to measure and manage your plan

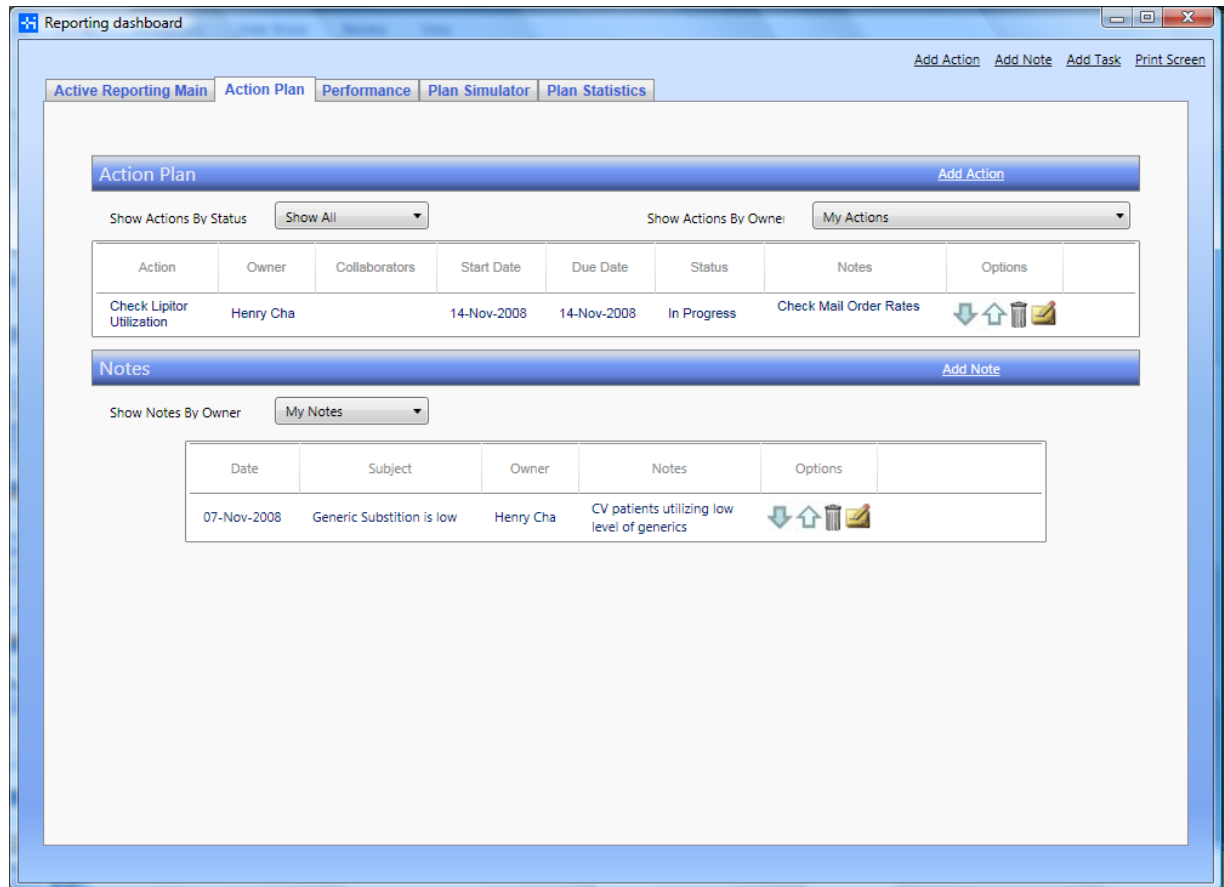
- Action plan – collaborative environment where the plan administrator and WellNet’s account management team work together
- Performance – find key health cost and condition metrics
- Plan simulator – try plan changes and estimate costs
- Plan statistics – use trending information to measure the effects of program changes and watch how the program is developing over time



Action Plan – Manage and Collaborate

Record, develop, and track plan changes in conjunction with your Wellnet team

- Develop plan changes and member marketing initiatives
- Record ideas and actions needed for new plan designs
- Collaborate with your WellNet account management team in a secure, virtual environment
- Create notes



The screenshot displays the 'Reporting dashboard' interface. At the top, there are navigation tabs: 'Active Reporting Main', 'Action Plan', 'Performance', 'Plan Simulator', and 'Plan Statistics'. The 'Action Plan' tab is currently selected. Below the tabs, there are two main sections: 'Action Plan' and 'Notes'.

Action Plan Section:

- Buttons: 'Add Action', 'Add Note', 'Add Task', 'Print Screen'.
- Filters: 'Show Actions By Status' (dropdown set to 'Show All') and 'Show Actions By Owner' (dropdown set to 'My Actions').
- Table:

Action	Owner	Collaborators	Start Date	Due Date	Status	Notes	Options
Check Lipitor Utilization	Henry Cha		14-Nov-2008	14-Nov-2008	In Progress	Check Mail Order Rates	Download, Upload, Delete, Edit icons

Notes Section:

- Buttons: 'Add Note'.
- Filter: 'Show Notes By Owner' (dropdown set to 'My Notes').
- Table:

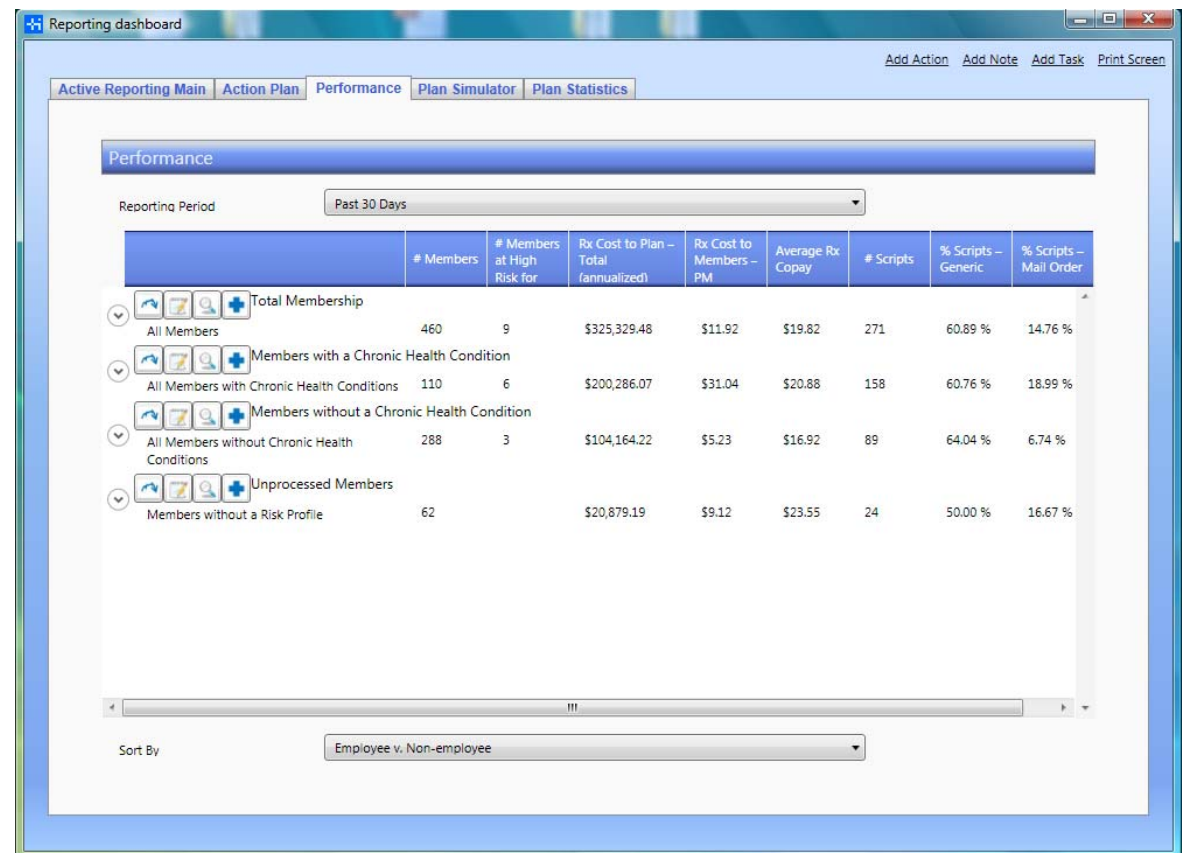
Date	Subject	Owner	Notes	Options
07-Nov-2008	Generic Substitution is low	Henry Cha	CV patients utilizing low level of generics	Download, Upload, Delete, Edit icons

Performance – Analyze strengths & expose weaknesses

Sample Group Data

With real-time data, know the answers to questions that directly relate to your plan's performance

- What's wrong with the plan?
- What's right with the plan?
- How are members affecting costs?
- Find details to address with your WellNet Account Management team



Reporting dashboard

Active Reporting Main Action Plan Performance Plan Simulator Plan Statistics

Performance

Reporting Period: Past 30 Days

	# Members	# Members at High Risk for	Rx Cost to Plan – Total (annualized)	Rx Cost to Members – PM	Average Rx Copay	# Scripts	% Scripts – Generic	% Scripts – Mail Order
Total Membership								
All Members	460	9	\$325,329.48	\$11.92	\$19.82	271	60.89 %	14.76 %
Members with a Chronic Health Condition								
All Members with Chronic Health Conditions	110	6	\$200,286.07	\$31.04	\$20.88	158	60.76 %	18.99 %
Members without a Chronic Health Condition								
All Members without Chronic Health Conditions	288	3	\$104,164.22	\$5.23	\$16.92	89	64.04 %	6.74 %
Unprocessed Members								
Members without a Risk Profile	62		\$20,879.19	\$9.12	\$23.55	24	50.00 %	16.67 %

Sort By: Employee v. Non-employee

Performance – Analyze strengths & expose weaknesses

Reporting dashboard

Active Reporting Main Action Plan Performance Plan Simulator Plan Statistics

Performance

Reporting Period: Past 30 Days

	# Members	# Members at High Risk for	Rx Cost to Plan – Total (annualized)	Rx Cost to Members – PM	Average Rx Copay	# Scripts	% Scripts – Generic	% Scripts – Mail Order
Total Membership								
All Members	460	9	\$325,329.48	\$11.92	\$19.82	271	60.89 %	14.76 %
Allergy/Immunology	53	4	\$28,983.07	\$0.29	\$19.00	7	71.43 %	28.57 %
Cardiovascular	64	6	\$48,554.07	\$3.33	\$28.36	54	48.15 %	24.07 %
Ears, Nose, Throat	7		\$1,215.41	\$0.10	\$22.50	2	50.00 %	0.00 %
Endocrine	36	5	\$31,088.91	\$1.04	\$17.66	27	51.85 %	11.11 %
Eye	24		\$1,366.93	\$0.08	\$35.00	1		
Female Reproductive	44		\$8,499.30	\$0.55	\$15.00	17		
Gastrointestinal/Hepatic	35	6	\$41,842.05	\$1.03	\$22.62	21		
General Signs and Symptoms	52	5	\$20,726.30	\$0.75	\$13.27	26		
Genito-Urinary	10		\$3,963.87	\$0.17	\$16.00	5		
Hematologic								
Infections	93	3	\$21,839.68	\$0.71	\$11.21	29		
Malignancies	4	2	\$6,570.93	\$0.08	\$35.00	1		
Musculoskeletal	3	1	\$1,312.96	\$0.02	\$10.55	1		
Neurologic	9	1	\$25,943.45	\$0.29	\$33.75	4		
Other and Non-Specific Medications	8	1	\$1,607.34	\$0.17	\$13.16	6		
Psychosocial	41	4	\$45,253.20	\$1.73	\$21.25	32		
Respiratory	54	2	\$16,629.58	\$0.65	\$21.43	14		

Sort By: Employee v. Non-employee

Sample Group: All Conditions

Sample Group: Chronic Conditions

Reporting dashboard

Active Reporting Main Action Plan Performance Plan Simulator Plan Statistics

Performance

Reporting Period: Past 30 Days

	# Members	# Members at High Risk for	Rx Cost to Plan – Total (annualized)	Rx Cost to Members – PM	Average Rx Copay	# Scripts	% Scripts – Generic	% Scripts – Mail Order
Total Membership								
All Members	460	9	\$325,329.48	\$11.92	\$19.82	271	60.89 %	14.76 %
Members with a Chronic Health Condition								
All Members with Chronic Health Conditions	110	6	\$200,286.07	\$31.04	\$20.88	158	60.76 %	18.99 %
Allergy/Immunology	30	4	\$25,153.72	\$0.86	\$23.75	4	50.00 %	25.00 %
Cardiovascular	62	6	\$41,403.78	\$11.61	\$31.92	40	47.50 %	32.50 %
Ears, Nose, Throat	2		\$322.15				0.00 %	0.00 %
Endocrine	24	4	\$24,277.22	\$2.65	\$19.45	15	46.67 %	13.33 %
Eye	5		\$169.96				0.00 %	0.00 %
Female Reproductive	9		\$1,380.59	\$0.59	\$16.25	4	75.00 %	0.00 %
Gastrointestinal/Hepatic	21	5	\$17,741.54	\$1.36	\$16.67	9	55.56 %	11.11 %
General Signs and Symptoms	28	3	\$7,722.56	\$1.50	\$12.69	13	92.31 %	7.69 %
Genito-Urinary	5		\$1,049.91	\$0.45	\$16.67	3	66.67 %	33.33 %
Hematologic							0.00 %	0.00 %
Infections	41	3	\$10,979.85	\$1.50	\$11.79	14	92.86 %	7.14 %
Malignancies	1	1	\$2,320.14				0.00 %	0.00 %
Musculoskeletal	3	1	\$1,310.16	\$0.10	\$10.55	1	100.00 %	100.00 %
Neurologic	5		\$9,107.34	\$1.23	\$33.75	4	25.00 %	25.00 %
Other and Non-Specific Medications	6	1	\$1,605.54	\$0.44	\$16.31	3	100.00 %	66.67 %

Sort By: Employee v. Non-employee

With data and information, maintain a high level of benefits that is cost effective and precisely manages issues within your population

Performance – Analyze strengths & expose weaknesses

Company Reports (Secure)

Select Company Report: CompanyRiskProfile
CompanyRiskProfile
CompanyRiskSummary
SMR Report

Find | Next

Risk Profile & Pot

Condition Categories	Total# Conditions	High Risk		Medium Risk		Low Risk		Average Annual Cost
		Conditions	Potential Cost	Conditions	Potential Cost	Conditions	Potential Cost	
Allergy/Immunology	61	4	\$49,516	20	\$247,580	37	\$458,023	\$12,379
Cardiovascular	92	11	\$184,151	53	\$887,273	28	\$468,748	\$16,741
Cardiovascular / Chronic Medical	6	0	\$0	6	\$100,446	0	\$0	
Cardiovascular / Congestive Heart Failure	2	1	\$16,741	1	\$16,741	0	\$0	
Cardiovascular / High Blood Pressure	52	6	\$100,446	28	\$468,748	18	\$301,338	
Cardiovascular / Hyperlipidemia	27	3	\$50,223	14	\$234,374	10	\$167,410	
Cardiovascular / Vascular Disorders	5	1	\$16,741	4	\$66,964	0	\$0	
Ear,Nose,Throat (ENT)	7	0	\$0	2	\$18,078	5	\$45,195	\$9,039
Endocrine	48	8	\$80,496	28	\$281,736	12	\$120,744	\$10,062
Eye	27	0	\$0	4	\$42,896	23	\$246,652	\$10,724
Female Reproductive	57	0	\$0	16	\$196,800	41	\$504,300	\$12,300
Gastrointestinal/Hepatic	43	6	\$76,464	28	\$356,832	9	\$114,696	\$12,744
Genitourinary	10	0	\$0	9	\$110,700	1	\$12	
Infectious Disease	104	3	\$48,174	36	\$578,088	65	\$1,043	
Malignancies/Cancer	4	2	\$38,550	2	\$38,550	0		
Musculoskeletal	4	1	\$22,243	3	\$66,729	0		
Neurological	13	1	\$13,942	10	\$139,420	2	\$27	
Psychosocial	57	5	\$41,375	37	\$306,175	15	\$124	
Respiratory System	67	2	\$24,758	17	\$210,443	48	\$594	
Skin (Integumentary)	51	4	\$41,632	14	\$145,712	33	\$343	
Totals	645	47	\$621,301	279	\$3,627,012	319	\$4,104	

Sample Group: Predictive Modeling

Sample Group: Prevalence of Conditions v. Norms

- Know your plan's risk exposure
- Which conditions pose the greatest / least risk for high \$ claims?
- Which conditions are prevalent at higher rates in your group v. norms?

Condition Code	Condition	Patient Count	Observed per 1000	Age/Sex Expected Per 1000	SMR	Confidence Of Significance	Direction	95% below	95% below	66% below	Norm	66% above	95% above	95% above
MAL	Malignancies	4	8.87	3.79	2.34	74.97 %	+							
FRE	Female Reproductive	54	119.73	91.41	1.31	93.61 %	+							
CAR	Cardiovascular	70	155.21	125.91	1.23	91.43 %	+							
GAS	Gastrointestinal/Hepatic	40	88.69	75.78	1.17	66.54 %	+							
MUS	Musculoskeletal	4	8.87	7.81	1.14	18.99 %	+							
EYE	Eye	24	53.22	48.69	1.09	33.14 %	+							
ZZZ	Other and Non-Specific Medications	12	26.61	25.66	1.04	9.95 %	+							
NUR	Neurologic	12	26.61	29.44	0.90	29.10 %	-							
ALL	Allergy/Immunology	55	121.95	136.11	0.90	64.17 %	-							
GUR	Genito-Urinary	10	22.17	25.37	0.87	35.55 %	-							
SKN	Skin	49	108.65	125.58	0.87	75.20 %	-							
END	Endocrine	39	86.47	102.80	0.84	78.27 %	-							
RES	Respiratory	58	128.60	154.10	0.83	89.42 %	-							
EAR	Ears, Nose, Throat	7	15.52	18.78	0.83	42.43 %	-							
PSY	Psychosocial	45	99.78	123.26	0.81	90.39 %	-							
INF	Infections	103	228.38	352.80	0.65	99.99 %	-							
GSI	General Signs and Symptoms	57	126.39	221.65	0.57	99.99 %	-							
HEM	Hematologic	0	0.00	0.08	0.00	NaN	-							
TOX	Toxic Effects/Adverse Effects	0	0.00	0.26	0.00	NaN	-							

Performance – Analyze strengths & expose weaknesses

Know, by condition, which drugs are the 10 most expensive to the plan

“Sample Group Top 10 Cardiovascular drugs in the last 30 day”

Top Drugs (Secure)

Top Ten Drugs by Cost to Plan

Select Condition: Cardiovascular

Reporting Period: Past 30 Days

Drug Name	# Scripts	# Members	Rx Cost to Plan	Rx Cost to Plan – Annual	Rx Cost to Members – Per Member	Average Rx Copay	% Scripts – Mail Order
LIPITOR	10	10	\$1,076.74	\$14,208.09	\$1.02	\$53.90	30.00 %
VYTORIN	3	3	\$638.79	\$3,837.98	\$0.23	\$40.00	100.00 %
SIMVASTATIN	3	3	\$163.99	\$2,212.69	\$0.04	\$6.67	33.33 %
ACEON	1	1	\$161.55	\$802.80	\$0.07	\$35.00	0.00 %
ZETIA	2	2	\$143.52	\$2,205.68	\$0.08	\$20.00	0.00 %
CADUET	1	1	\$127.14	\$1,391.62	\$0.04	\$20.00	0.00 %
ATACAND HCT	2	2	\$124.88	\$850.96	\$0.08	\$20.00	0.00 %

LIPITOR	Cardiovascular	SSB	10	10	\$1,076.74	\$14,208.09	\$1.02	\$53.90	30.00 %
VYTORIN	Cardiovascular	SSB	3	3	\$638.79	\$3,837.98	\$0.23	\$40.00	100.00 %
SIMVASTATIN	Cardiovascular	G	3	3	\$163.99	\$2,212.69	\$0.04	\$6.67	33.33 %
ACEON	Cardiovascular	SSB	1	1	\$161.55	\$802.80	\$0.07	\$35.00	0.00 %
ZETIA	Cardiovascular	SSB	2	2	\$143.52	\$2,205.68	\$0.08	\$20.00	0.00 %
CADUET	Cardiovascular	SSB	1	1	\$127.14	\$1,391.62	\$0.04	\$20.00	0.00 %
ATACAND HCT	Cardiovascular	SSB	2	2	\$124.88	\$850.96	\$0.08	\$20.00	0.00 %
NIFEDIPINE ER	Cardiovascular	G	1	1	\$95.34	\$586.05	\$0.04	\$20.00	100.00 %
TRICOR	Cardiovascular	SSB	1	1	\$91.53	\$2,451.87	\$0.04	\$20.00	0.00 %
METOPROLOL SUCCINATE	Cardiovascular, Gastrointestinal/ Hepatic	G	4	4	\$68.31	\$978.12	\$0.09	\$12.50	25.00 %

Plan Simulator – See the impact of changes in your plan

Plan Simulator – Research and test out plan changes to reveal highest return on investment

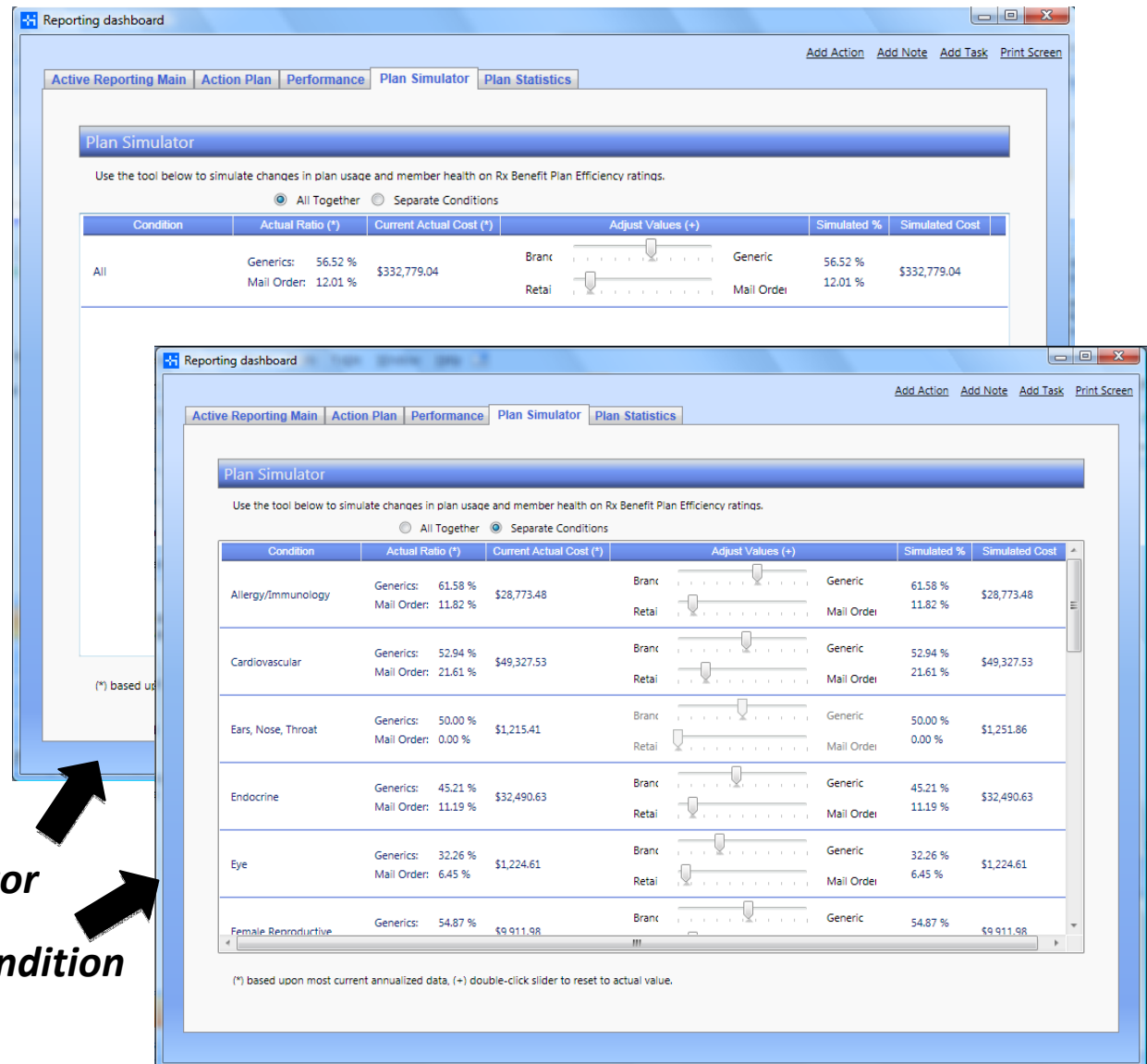
- Test theories through quick and simple overall plan adjustments

- Estimate the return on investment for member campaigns to reduce cost – overall and within specific condition categories

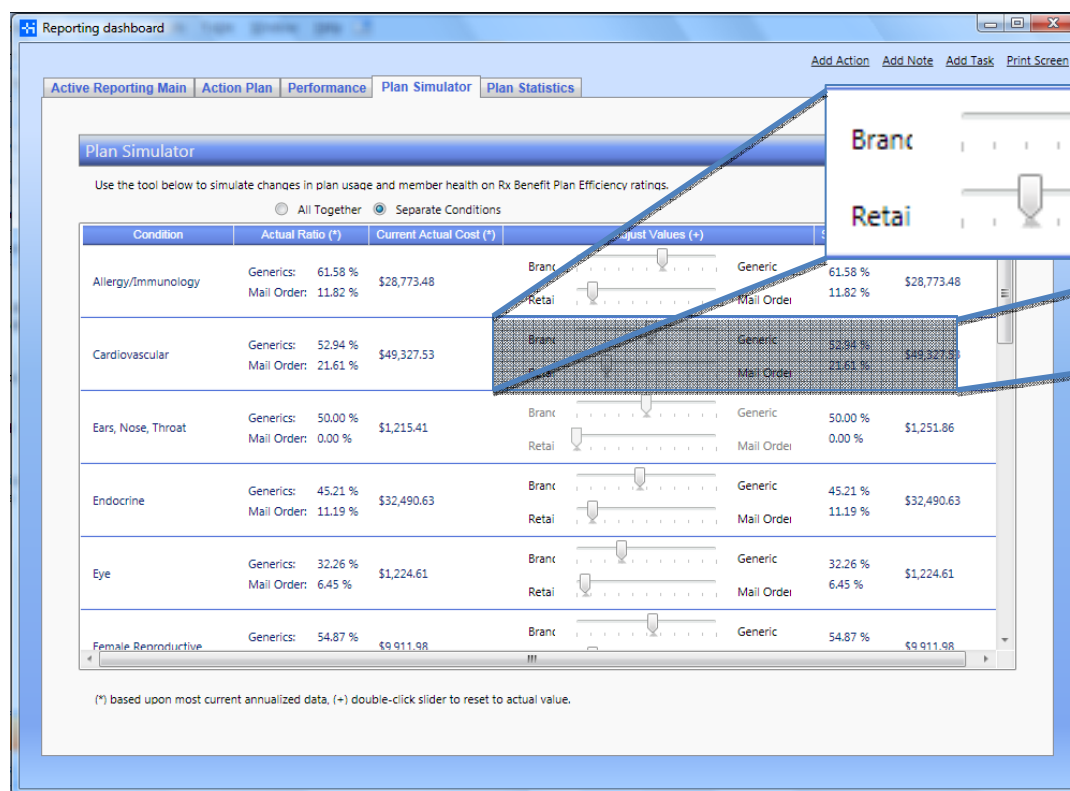
- Base decisions on your group's actual utilization patterns by condition and by drug

Sample Group: General Simulator

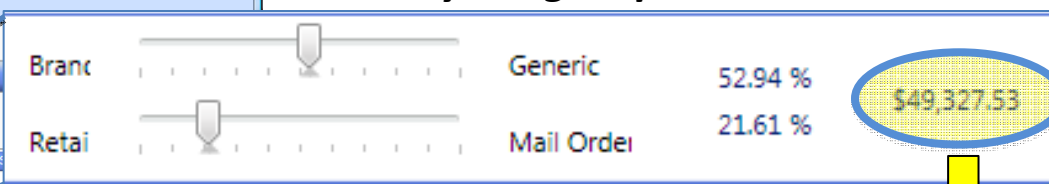
Sample Group: Simulator by Condition



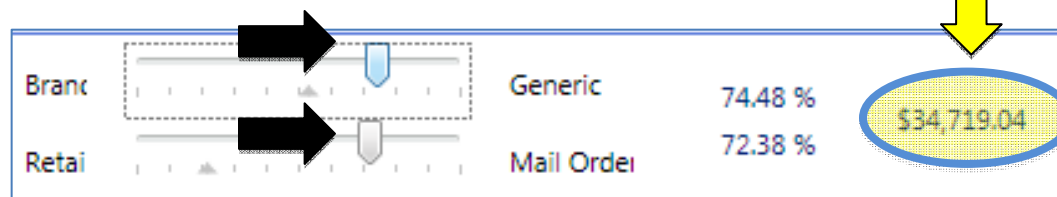
Plan Simulator – See the impact of changes in your plan



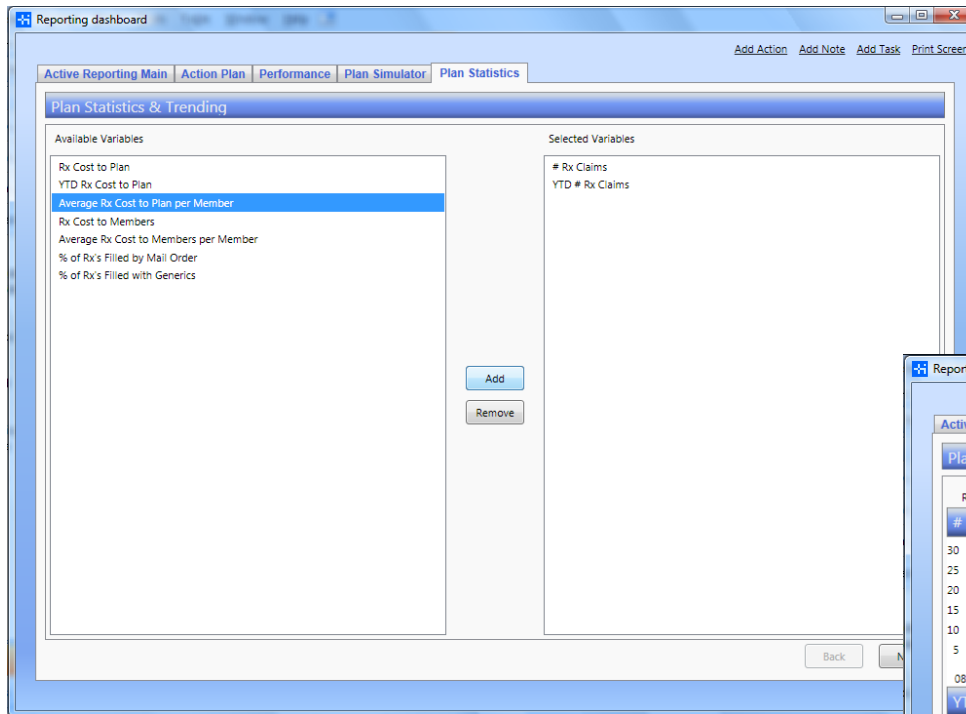
See your group's actual data



Adjust utilization data to reveal the impact on your plan's cost



Plan Statistics – Monitor trends and changes over time

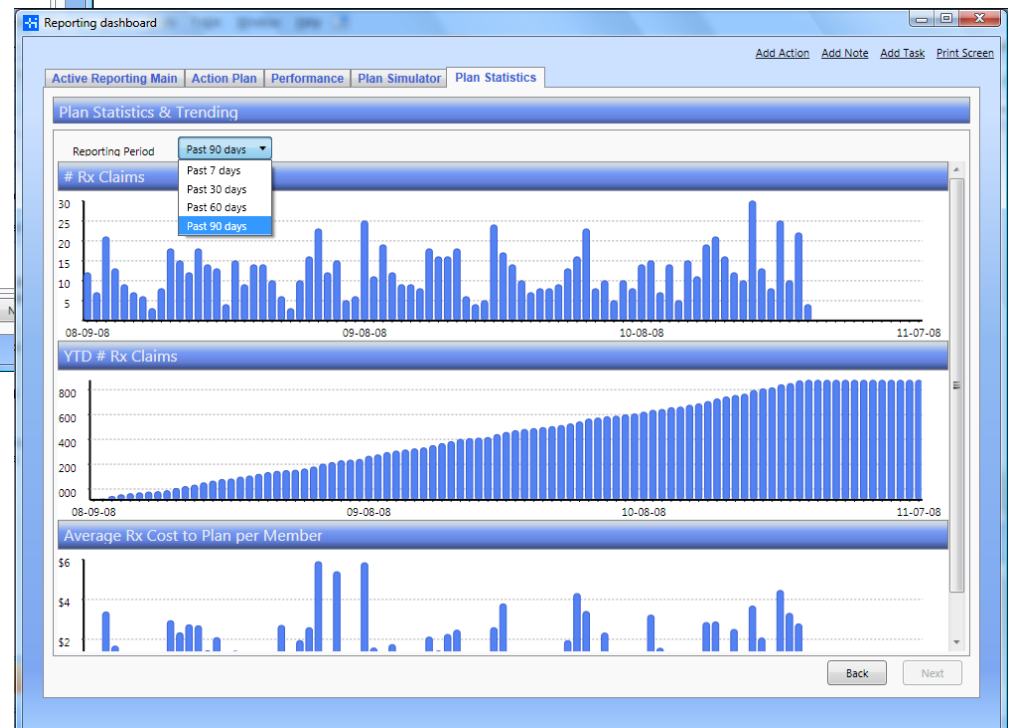


Monitor Sample Group's Rx plan

- In real time
- When you need it

Create custom reports, tracking and comparing data points of interest to you and your management team

- Manage a variety of metrics and trends
- Measure, manage and create results



WellNet's Point to Point Healthcare is an...

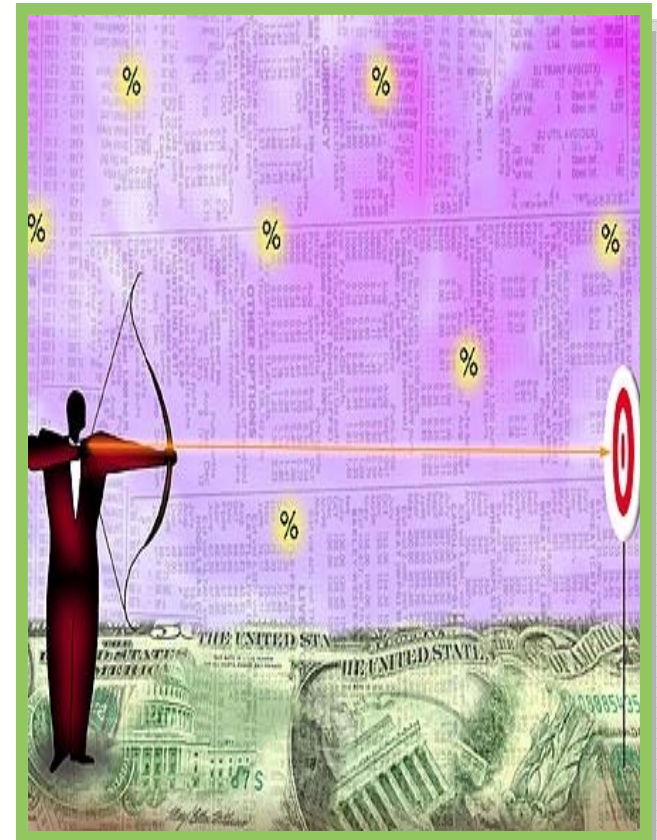
- Interactive,
- Real-time,
- Data-driven,
- Customized system

WellNet's Point to Point Healthcare is able to...

- Predict,
- Model,
- Track,
- Compare,
- Simulate change, and
- Expose plan strengths & weaknesses

WellNet's Point to Point Healthcare Helps you...

- Analyze,
- Collaborate,
- Improve, and
- Save money through a common sense approach to managing healthcare**



For Technical Support please contact:

Josh Birger

Systems Engineer

Healthcare Interactive

410-489-2700

josh.birger@hciactive.com